

SPECIFICATIONS

Echo Sounder

Ver.2024.02.05

Measurements

Frequency	200 kHz
Beam Angle	7
Depth Resolution	0.1ft / 0.01m
Accuracy	±1cm ± 0.1 D
Ping Rate	14Hz, Maximum 30Hz
Sound Velocity	1300-1700m/s resolution is 1m/s
Depth Range	0.3-300m/900ft
Draft	0-9.9m
Gain Control	AGC and TVG, depth and gain, a double door tracking

Physical

Environmental	-30°C~+60°C non-condensing
Size	35cm x 29cm x 14cm
Weight	7.5kg

Electrical and Battery

Power Supply	9-15V DC, less than 25w, 110~265V AC (optional),
Output Power	Up to 300w
CPU frequency	1.6GHz
Internal Memory	2G
Memory Capacity	8G high-speed CF card
Extended Storage	Support

Communication

USB Port	2
RS232 Port	2
VGA Interface Port	1
Display	12.1-inch Color LCD Touch Screen
System	Embedded windows XP OS
Keyboard	Support
Mouse	Support
Output Data Format	SOUTH, SDH-13D, DES025, INN455, ODOM etc

APPLICATION



Reservoir Depth Surveying



Lake Depth Surveying



Dredging Engineering Surveying

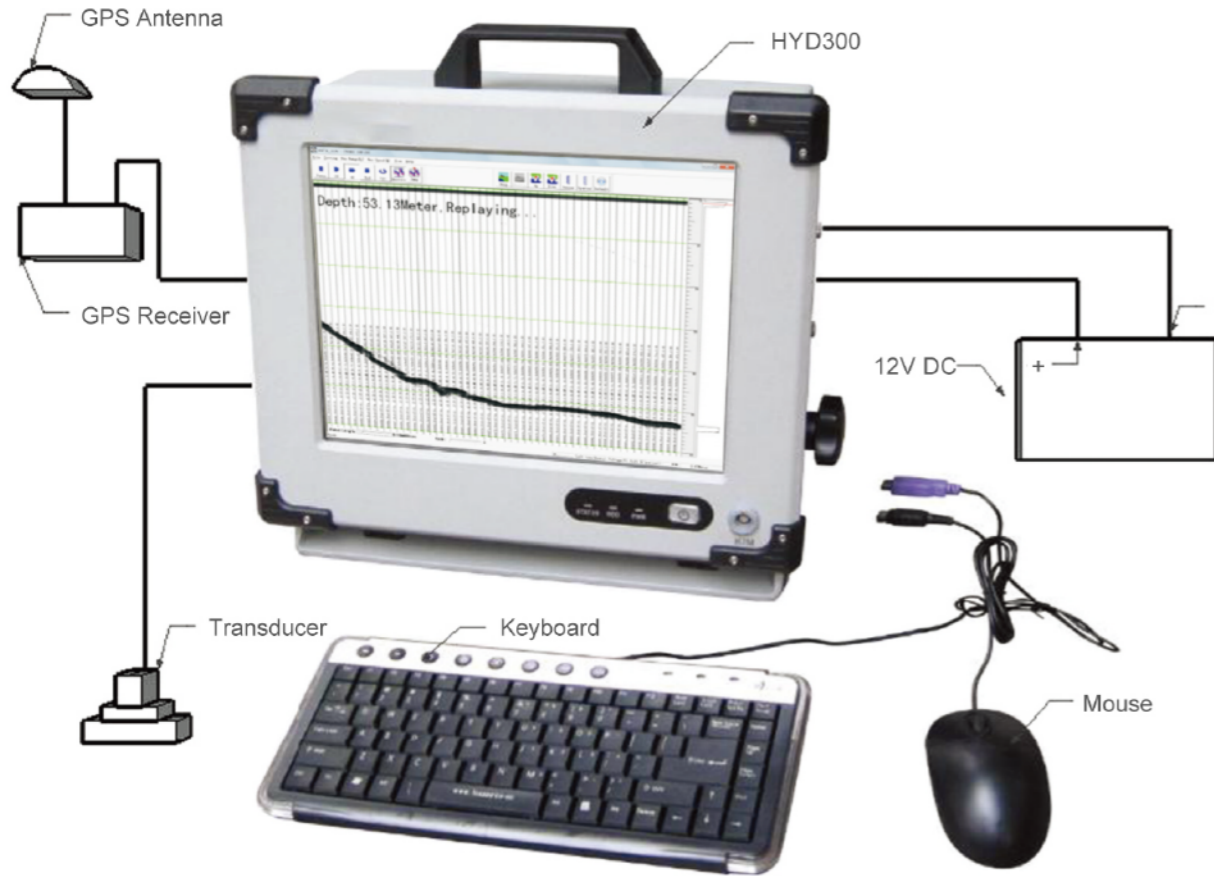


Coastland Depth Surveying

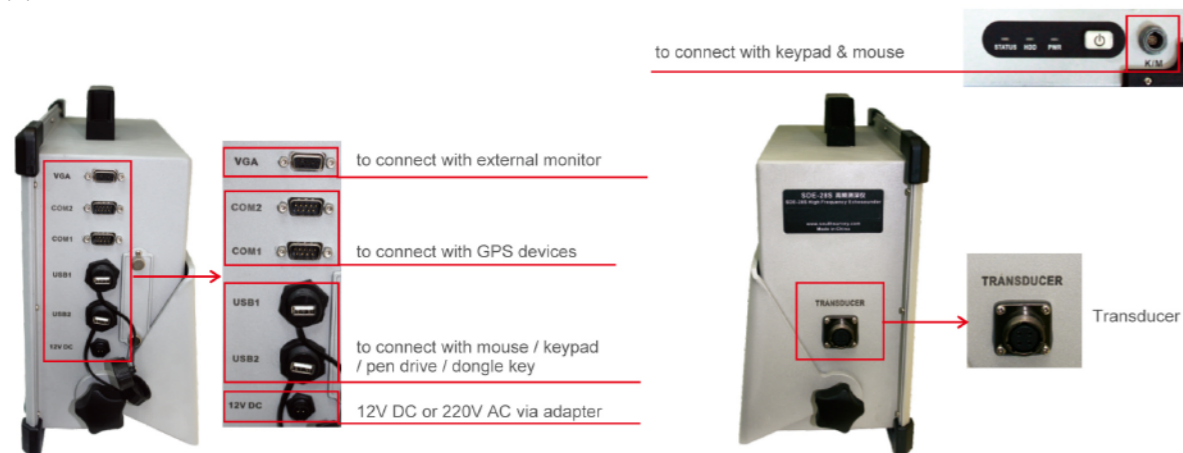


HYD300 ECHO SOUNDER

The ComNav HYD300 echo sounder is an integrated industrial control and digital echo sounding system featuring a 12.1-inch TFT-LCD screen, industrial control unit, echo sounding unit, data processor, internal memory unit, and various interfaces. The special design makes it dust-proof, waterproof, shockproof. It seamlessly combines depth measurement, graphical navigation, and water depth data acquisition. Its special design ensures strong compatibility, stable performance, and reliable accuracy.



INTERFACE



FEATURE

Powerful Performance



High-speed DSP chip processing technology to ensure reliable waveforms and depth values. Supports NMEA-0183 communication to gain orientation information.

High Compatibility



Flexible to connect different GPS devices, Built-in flash memory upgradeable to larger capacity for diverse demands. Automatic storage of depth data up to 24 hours, supports replay.

User-friendly Interface



Integrated with both computer and echo sounder at industrial level, yet low power consumption. 12.1-inch color LCD featuring a wide viewing angle and adjustable brightness.

Robust Construction

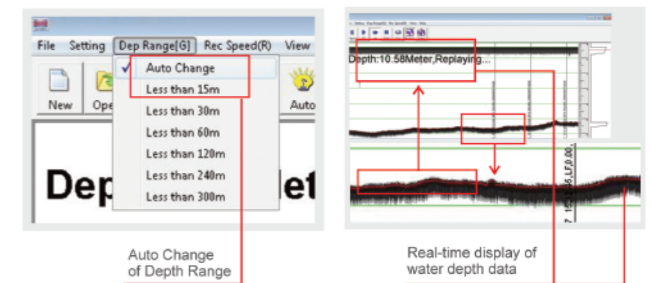


Full aluminum housing, compact and handy, particularly designed for less-than-ideal circumstances.

SOFTWARE

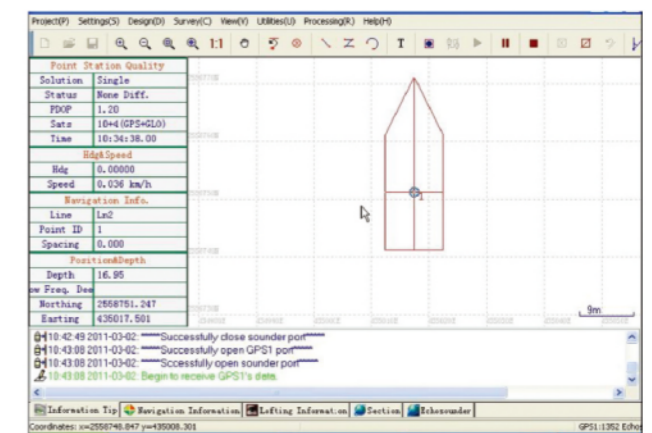
HYD300 (for depth measurements)

- Real-time vivid display of graphic and data,
- Integrated sound velocity calculation for more accurate results
- Smart alarm for shallow water and "No echo" tracking to secure hydrographic operations
- Real-time display of the water depth value tracking lines, easy to be compared with underwater waves
- Automatic measurements and switch, Intelligent operation
- Optional output formats and convenient



PowerNav

- New software kernel, faster processing and more stable
- Professional Engineering map sheet and data management, wizardstyle parameter setting
- High compatibility, flexible to import graphs and data, connectible to all GPS devices and echo sounders
- Modular designed, meets diverse needs of hydrographic engineering projects
- Direct graphical navigation window box, auto voice prompt for yaw
- Intelligent scheme line model, available for fast drawing of waterway, Area, arc, etc.
- Customized formats for data export edit, easy to export To all Mapping software



PowerNav